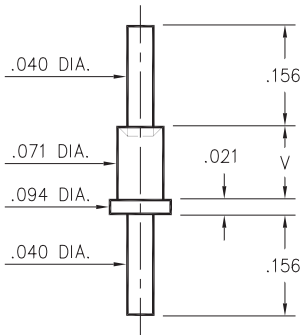


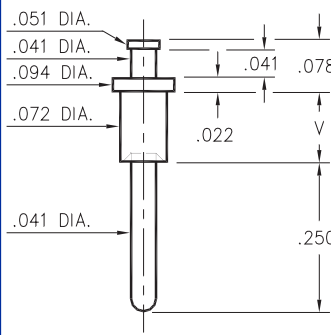
2319



- X -	Board Thickness	Length V
1	.031	.051
2	.062	.082
3	.094	.113

2319-X-00-XX-00-00-07-0
Swage mount in .076 hole

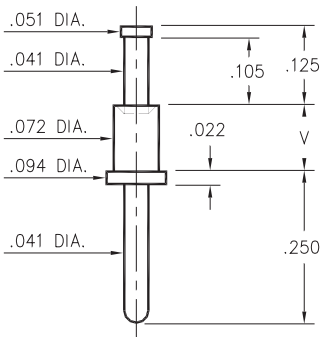
2313



- X -	Board Thickness	Length V
1	.031	.051
2	.062	.084
3	.094	.113
4	.125	.145

2313-X-00-XX-00-00-07-0
Swage mount in .076 hole

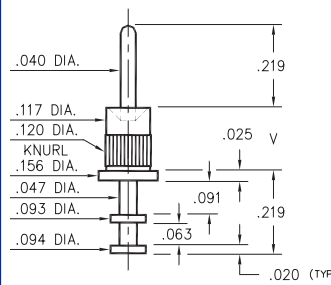
2321



- X -	Board Thickness	Length V
1	.031	.051
2	.062	.082
3	.094	.113
4	.125	.145

2321-X-00-XX-00-00-07-0
Swage mount in .076 hole

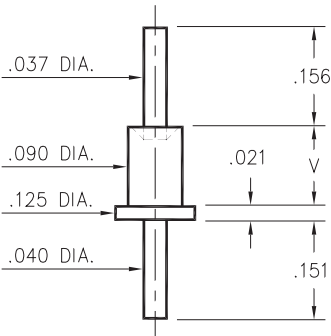
2706



- X -	Board Thickness	Length V
1	.031	.063
2	.062	.093
3	.094	.125
4	.125	.156

2706-X-00-XX-00-00-07-0
Swage mount in .120 hole

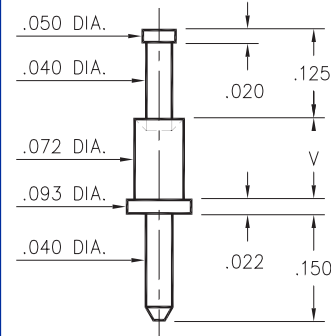
2530



- X -	Board Thickness	Length V
2	.062	.094
3	.094	.125
4	.125	.156

2530-X-00-XX-00-00-07-0
Swage mount in .094 hole

3156



Basic Part Number	Board Thickness	Length V
3156-1	.031	.051
3156-2	.062	.082
3156-3	.094	.113
3156-4	.125	.145

3156-X-00-XX-00-00-08-0
Swage mount in .076 hole

SPECIFICATIONS

PIN MATERIAL:
Brass Alloy 360, 1/2 Hard
Swage pins are annealed

DIMENSION IN INCHES
TOLERANCES ON:
LENGTHS: ±.005
DIAMETERS: ±.002
ANGLES: ± 2°

ORDER CODE: 2XXX - X - 00 - XX - 00 - 00 - 07 - 0

BASIC PART #

SPECIFY PIN FINISH:
01 200µ" TIN/LEAD OVER NICKEL
80 200µ" TIN OVER NICKEL ◊
44 300µ" SILVER OVER COPPER ◊
50 300µ" ELECTRO-SOLDER
(60/40 SnPb)

